



DIGI·WAVE TWO-WAY PERSONAL COMMUNICATION



WHAT IS DIGI·WAVE?

The new Digi-Wave is a simultaneous, one- or two-way wireless communication system in the 2.4 GHz band. Slim, lightweight, and simple to set up and use, Digi-Wave Personal Communication Systems can be used in listen-only situations or for connecting through conversation with family members, co-workers or fellow students. This digital technology is ideal for discussions in the car, TV listening, talking at a restaurant, sharing ideas in a meeting, and in other one-on-one or small-group settings.

Why Digi·Wave? — Consider these features.

- State-of-the-art digital technology
- Compact, stylish and completely portable
- Four groups can operate simultaneously within a 200-foot range (in 1- or 2-way mode)
- Can be used with hearing aid or cochlear implant
- 2-year-warranty
- Legal for use in most countries
- DLT 100 2.0 transceiver has a built-in microphone and speaker; participants do not need to wear a headset when seated around a table. It can be held to the ear
- DLT 100 2.0 LCD screen displays signal strength, battery level, mode, time, talk/priority status
- DLT 100 2.0 includes individual charger, with 14 hours of use per charge
- Range: Up to 100 ft outdoors and up to 200 ft* indoors

2
WAY

TEAM TEACHING

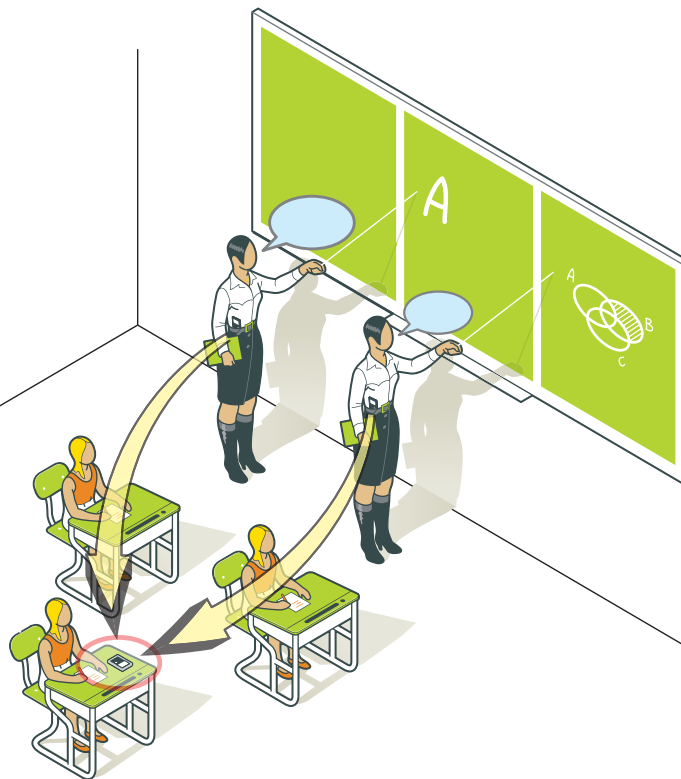


TALK 2 ME

Digi-Wave Personal Communication System (DWS PCS2) is your wireless way to “talk back”. Not only does this simultaneous, two-way system help you hear in everyday situations, you can easily access two-way communication with the push of a button. Perfect for classrooms, Digi-Wave maximizes a student’s ability to hear, ensures that the teacher’s message is heard clearly, and provides the option for student Q&A.

In the classroom.

Add an optional DLT 100 2.0 transceiver and MIC 044 2P Headset Microphone to your Williams Sound DWS PCS2 to create the ideal team-teach scenario. Two teachers can speak simultaneously and hear one another. The student can hear both teachers and has push-to-talk capability.



2
WAY

CONFERENCE



TALK 2 ME

Add an optional DLT 100 2.0 transceiver to your Personal Communication System (DWS PCS2) to enhance conference/meeting interaction. Place a DLT 100 2.0 on either end of a conference table. (The DLT 100 2.0 features a built-in microphone and speaker, so additional headsets for other meeting attendees are unnecessary.) The listener (with a DLT 100 2.0) can hear other meeting attendees and has push-to-talk capability.

System includes

(2) DLT 100 2.0 Transceivers / (2) MIC 044 2P Headset Microphones / (1) CHG 102 2-bay charger / (2) CCS 044 Silicone Cases / (1) CCS 043 System Carry Case

Optional accessories to consider

DLT 100 2.0 Transceiver / DLR 60 2.0 Receiver / MIC 049 Conference Microphone / MIC 044 2P Headset Microphone / NKL 001 Neckloop / CHG 102 Two-Bay Charger / CCS 044 Silicone Case / CCS 045 Belt Clip





PERSON-TO-PERSON

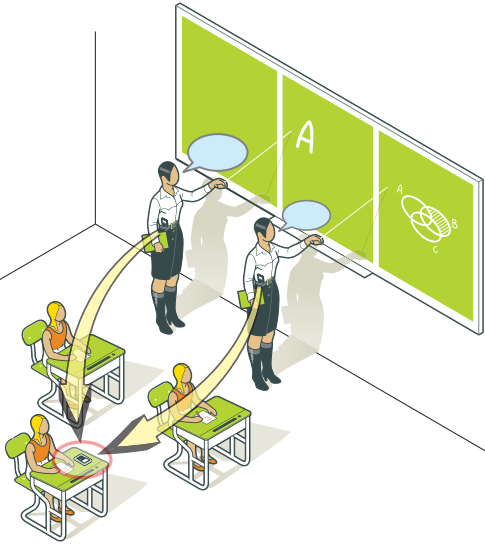
Digi-Wave Personal Communication System (DWS PCS3) is one-way, digital technology that makes it easier to hear in everyday situations by reducing background noise and compensating for poor room acoustics or distance from the sound source. Beneficial for an array of personal listening scenarios—from conversations around the coffee table to hearing every word of your favorite TV program. Simply place the DLT 100 2.0 near the sound source.

System includes

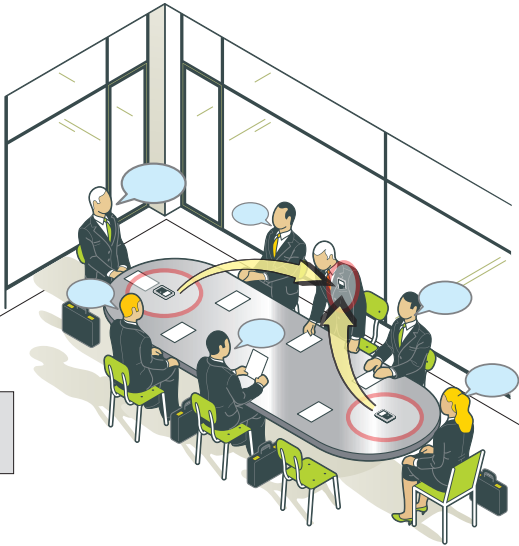
(1) DLT 100 2.0 Transceiver / (1) DLR 60 2.0 Receiver / (1) MIC 090 Lapel Microphone / (1) EAR 041 Earphone / (1) CHG 102 2-bay charger / (1) CCS 044 Silicone Case / (1) CCS 043 System Carry Case



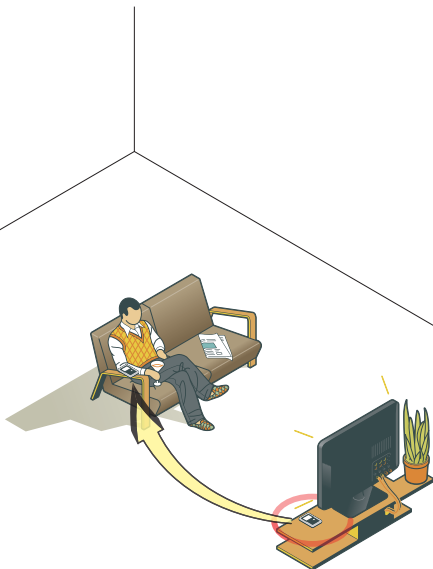
Team Teaching



Personal Conference



Personal Listening



SPECIFICATIONS

DLT 100 2.0 Transceiver

Battery life	Up to 14hrs talk time per charge
Charge time	5hrs. TFP 045 with cable and international adapters. Optional two-bay charger (CHG 102)
Channels	Up to 4 simultaneous groups
Operating frequencies	2.4GHz (ISM band) 2.402 – 2.476GHz FHSS
Audio Output	Max SSPL: 111.8dB (EAR 013), 116.8dB (EAR 041) Internal speaker: 16mW @ 33Ω (disabled when earjack engaged)
Range	Up to 100ft outdoors and 200ft indoors*
Speaker	Internal speaker (disabled when ear jack is engaged)
Indicators	LCD (Group, channel, volume level, battery status, mode, signal strength) LED (charge status) Red LED around talk button when enabled
Maximum presenters	Two presenters at any given time
Approvals	FCC, Industrie Canada, CE, C-tick, RoHS, WEEE
Warranty	2 years parts and labor (90 days on accessories).

DLR 60 2.0 Receiver

Battery life	Alkaline Disposable (BAT 010-2): Up to 27 hrs NiMH Rechargeable (BAT 022-2): Up to 21 hrs
Channels	Up to 15 simultaneous channels (one way mode)
Operating frequencies	2.4 GHz (ISM band)
Audio Output	Max SSPL: 111.8dB (EAR 013), 116.8dB (EAR 041) Internal speaker: 16mW @ 33Ω (disabled when earjack engaged)
Range	Up to 100ft outdoors and 200ft indoors*
Indicators	Red LED - blinks when charging Green LED - stays on when charged
Approvals	FCC, Industrie Canada, CE, C-tick, RoHS, WEEE
Warranty	2 years parts and labor (90 days on accessories).



For more information about Williams Sound's full line of assistive listening products and accessories, contact our sales department at

800.843.3544 / +1.952.943.2252 / info@williamssound.com / www.williamssound.com